

# MCTC 2014 Regional Transportation Plan and Sustainable Communities Strategy (RTP/SCS)

## Public Workshop Mapping Exercise February 12, 2013

### Introduction

This mapping exercise is intended to help MCTC identify what you believe the major transportation, land use, and environmental issues or needs in your subregion of Madera County might be. This information will be used to help MCTC develop the alternative scenarios that will be shared with you at the next series of workshops in March 2013.

Working with others at your table or in your group, you will identify areas where transportation improvements are needed, the type of new development that should be planned for in the future to support the transportation system, and where environmental conditions should be avoided or improved. Icon magnets have been provided at your table representing each of the three categories of needs (transportation improvements, supportive land use developments, and environmental considerations). These magnets will be placed on the map provided on the easel next to your table. You may also draw circles around areas you want to highlight, use a magnet piece placed on the border of the map, and then draw an arrow between the magnet piece and the circled area or just place the magnet within the circled area.

## Mapping Exercise Steps

1. **Introduce yourselves**
2. **Review the magnet icons**

The magnet icons include:

### TRANSPORTATION IMPROVEMENTS

- Adding travel lanes (if possible)
- New intersection improvements (traffic signals, stop signs, roundabouts)
- New interchanges
- Rehabilitation of existing streets and roads (fix potholes, new curbs/gutters, etc.)
- Safety improvements (turn-outs, passing lanes, rumble lane treatment, warning signage, etc.)
- Increased Transit Frequency (improve bus headways e.g.: 1 hour to 30 minutes)
- New Bus Rapid Transit Lines
- New bikeways
- New pedestrian facilities or improvements (sidewalks, crosswalks, etc.)
- Streetscape improvements (designed landscape, walkway, bikeway, and street improvements)

### SUPPORTIVE LAND USE DEVELOPMENTS

- Single Family Homes
- Apartments
- Mixed-use developments
- Transit oriented developments
- Shopping centers
- Service commercial developments
- Entertainment centers
- Civic center developments
- Office developments
- Industrial developments
- Medical facilities

- Educational facilities
- Recreational facilities (parks, sports complexes/fields, etc.)
- Agricultural land/open space

## **ENVIRONMENTAL CONSIDERATIONS**

- Water quality, quantity
- Animal and plant habitat
- Light and glare
- Noise
- Air quality/greenhouse gas emissions
- Scenic resources
- Historic or archeological resources

### **3. Break-Out Group Consensus**

Work with your break-out group and decide collectively where transportation improvements are needed between now and the year 2040, where new growth and development should be located to support the future transportation system, and where there may be environmental constraints or areas that need to be preserved.

## Magnet Set:

The environmental enhancement, transportation improvement, and supportive land use development magnets shown below will be arranged by your group by placing them on the base map at your table. You will work with your group to identify the group's consensus regarding future transportation system needs, supportive land use developments, and environmental constraints or need for improvements.

### TRANSPORTATION IMPROVEMENT ICONS:

Adding travel lanes, if possible



New Intersection Improvements



New Interchange



Street Rehabilitation



Safety Improvements



Increased Transit Bus Frequency/  
Bus Rapid Transit



New Bikeways



New Pedestrian Facilities



Streetscape Improvements



# LAND USE DEVELOPMENT ICONS

Homes



Apartments



Mixed Use



TOD



Shopping Center



Service Commercial



Entertainment



Civic Center



Office



Industrial



Medical



Educational



Recreational



Agricultural/Open Space



## ENVIRONMENTAL ENHANCEMENT ICONS

Water



Animal/Plant



Light/Glare



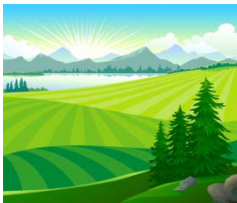
Noise



AQ/GHG



Scenic



Historic/Cultural

