

2014 RTP, SCS and PEIR

Regional Transportation Plan
and
Sustainable Communities
Strategy
Roundtable #2
December 20, 2012



MCTC 2014 RTP, SCS, and PEIR



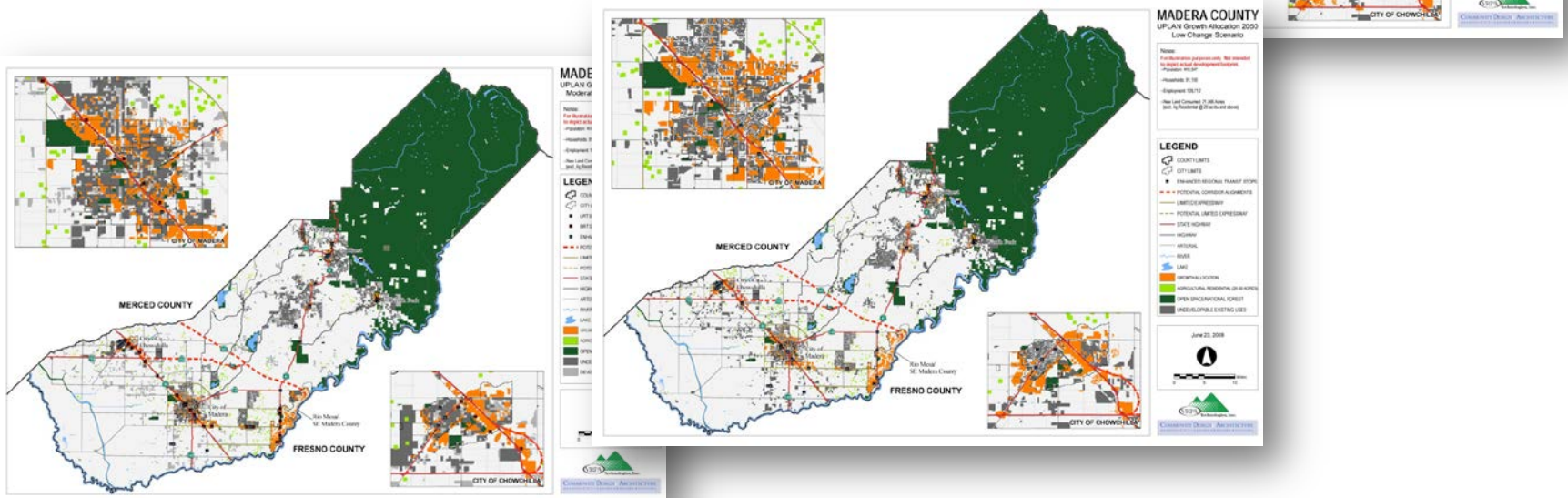
Presentation Overview:

- ✓ Potential SCS Scenarios
- ✓ RTP/SCS Modeling Process
- ✓ Questions/Comments



Potential SCS Scenarios

- To be based upon the Scenarios developed under the **Blueprint Process**
 - **Status Quo**
 - **Low Change**
 - **Moderate Change**



Potential SCS Scenarios

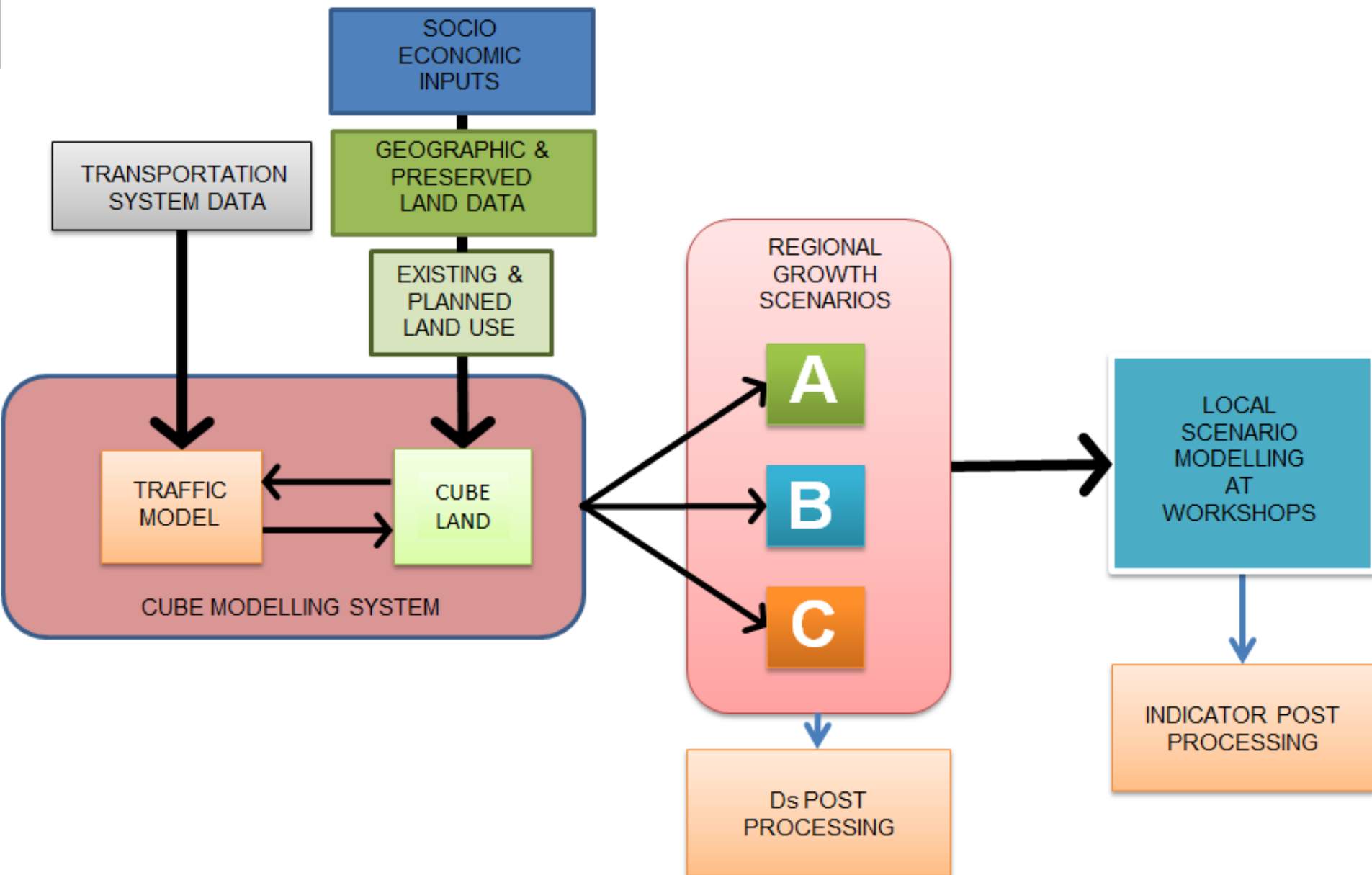


- Three potential SCS Scenarios to be developed –
 - Existing Trend
 - Incremental Change
 - Urban-Focus Change
- All will be based on state Department of Finance population projection for Madera County
- The socio-economic trends may vary between scenarios
 - Jobs per Household
 - Persons per Household
 - Employment Distribution between sectors (*Industrial, Agriculture, Retail etc.*)
 - Housing type share
 - Household Income distribution (*to reflect shifts in employment sector distribution*)

Potential SCS Scenarios

	Existing Trend	Incremental Change	Urban-Focus Change
Blueprint Base	<i>Status Quo</i>	<i>Low Change</i>	<i>Low and Moderate Change Hybrid</i>
Jobs per Household	<i>Existing</i>	<i>Slight Increase</i>	<i>Further Increase</i>
Persons per Household	<i>Existing</i>	<i>Existing</i>	<i>Slight decrease</i>
Employment Sector Distribution	<i>Existing</i>	<i>Slight shift away from agriculture and Industrial</i>	<i>Further shift away from agriculture and Industrial</i>
Household Income distribution	<i>Existing</i>	<i>Slight increase in average HH income</i>	<i>Further increase in average HH income</i>
Housing share	<i>Existing</i>	<ul style="list-style-type: none"> - Existing demand of unit type, but smaller lots - Some mixed use in core areas 	<ul style="list-style-type: none"> - Increase in multi-family demand in Madera City and Rio Mesa - More mixed use in more core areas
Infill consideration	<i>Very Low</i>	<i>Low</i>	<i>Moderate</i>
Transportation	<i>Existing</i>	<i>Existing with Enhancements to Transit and some Pedestrian and Bicycle Infrastructure</i>	<i>Addition of BRT route(s) and more investment in Pedestrian and Bicycle Infrastructure</i>

RTP/SCS Modeling Process



RTP/SCS Modeling Process



SPATIAL INPUTS

- Utilize data developed during the Blueprint Process
 - Vacant Land Data
 - Potential Re-developable Land
 - Prime Agricultural Land
 - Preserved Open Space
- Standardize Existing General Plans to inputs for Model
- Develop Context Sensitive Mixed-Use Place-types to be applied within existing communities as desired activity centers.
- A greater gradation of housing densities will be utilized for urban centers (*break 20 du/ac HDR average into 2 or 3 segments in Urban-Focus Scenario*)
- Utilize Planned Transportation improvements in the RTP as growth attractors
- Adjust model results to account for small-scale land use effects

MCTC 2014 RTP, SCS, and PEIR



Questions / Comments

